



Clinical Practice Procedures: Assessment/Blood analysis – CoaguChek®XS

Policy code	DTP_AS_BAI_0722
Date	July, 2022
Purpose	To ensure a consistent procedural approach to glucose 10% administration.
Scope	Applies to Queensland Ambulance Service (QAS) clinical staff.
Health care setting	Pre-hospital assessment and treatment.
Population	Applies to all ages unless stated otherwise.
Source of funding	Internal – 100%
Author	Clinical Quality & Patient Safety Unit, QAS
Review date	July, 2025
Information security	UNCLASSIFIED – Queensland Government Information Security Classification Framework.
URL	https://ambulance.qld.gov.au/clinical.html

While the QAS has attempted to contact all copyright owners, this has not always been possible. The QAS would welcome notification from any copyright holder who has been omitted or incorrectly acknowledged.

All feedback and suggestions are welcome. Please forward to: Clinical.Guidelines@ambulance.qld.gov.au

Disclaimer

The Digital Clinical Practice Manual is expressly intended for use by appropriately qualified QAS clinicians when performing duties and delivering ambulance services for, and on behalf of, the QAS.

The QAS disclaims, to the maximum extent permitted by law, all responsibility and all liability (including without limitation, liability in negligence) for all expenses, losses, damages and costs incurred for any reason associated with the use of this manual, including the materials within or referred to throughout this document being in any way inaccurate, out of context, incomplete or unavailable.

© State of Queensland (Queensland Ambulance Service) 2022.



This work is licensed under the Creative Commons Attribution-NonCommercial-NoDerivatives V4.0 International License

You are free to copy and communicate the work in its current form for non-commercial purposes, as long as you attribute the State of Queensland, Queensland Ambulance Service and comply with the licence terms. If you alter the work, you may not share or distribute the modified work. To view a copy of this license, visit <http://creativecommons.org/licenses/by-nc-nd/4.0/deed.en>

For copyright permissions beyond the scope of this license please contact: Clinical.Guidelines@ambulance.qld.gov.au

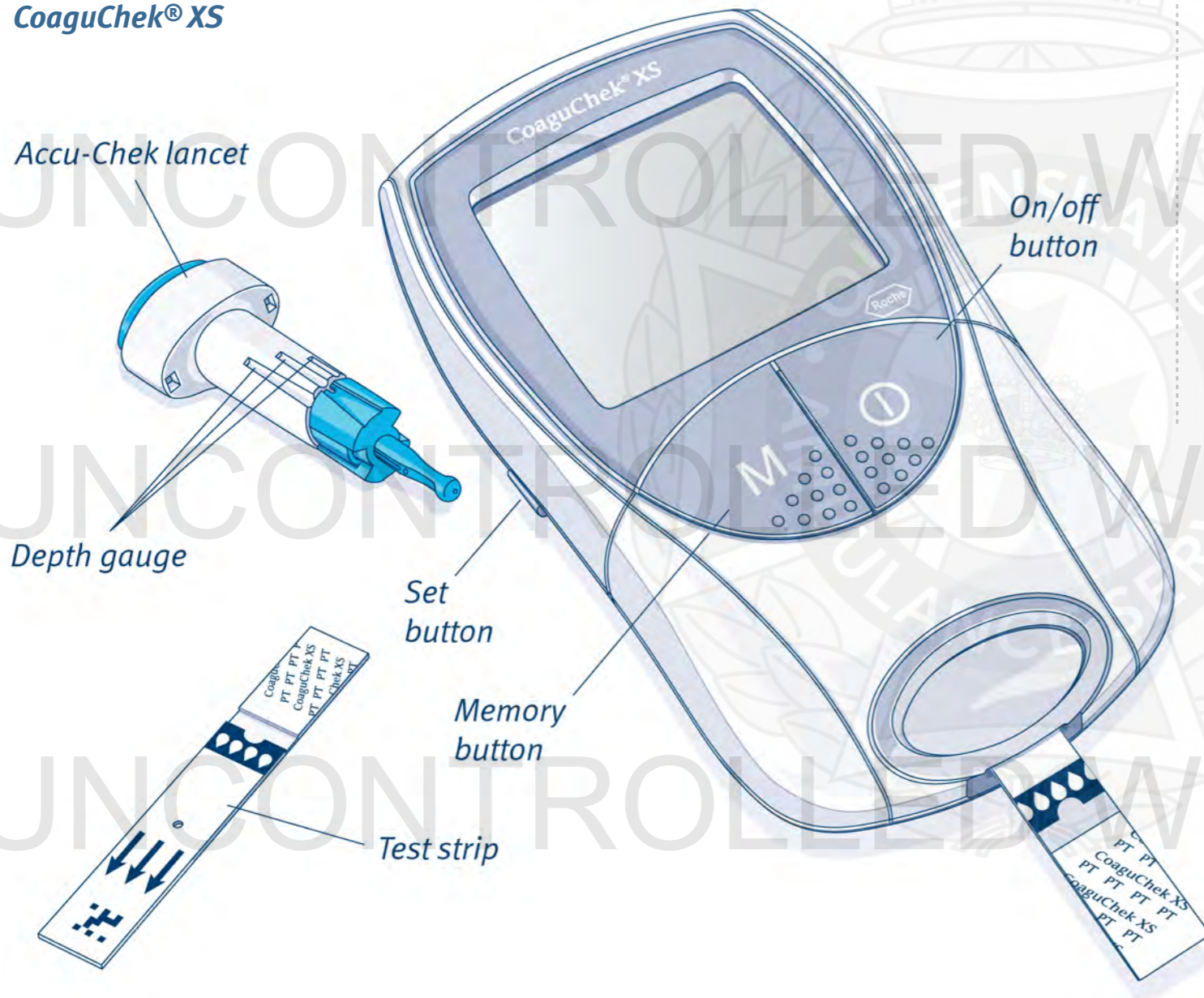
Blood analysis – CoaguChek® XS

July, 2022

The **CoaguChek® XS** is a point of care (POC) portable blood analyser used to quantitatively measure and report an International Normalised Ratio (INR) using capillary blood.^[1]

POC testing enables quantitative and timely reporting without the physical requirements of a clinical laboratory.

CoaguChek® XS



Indications

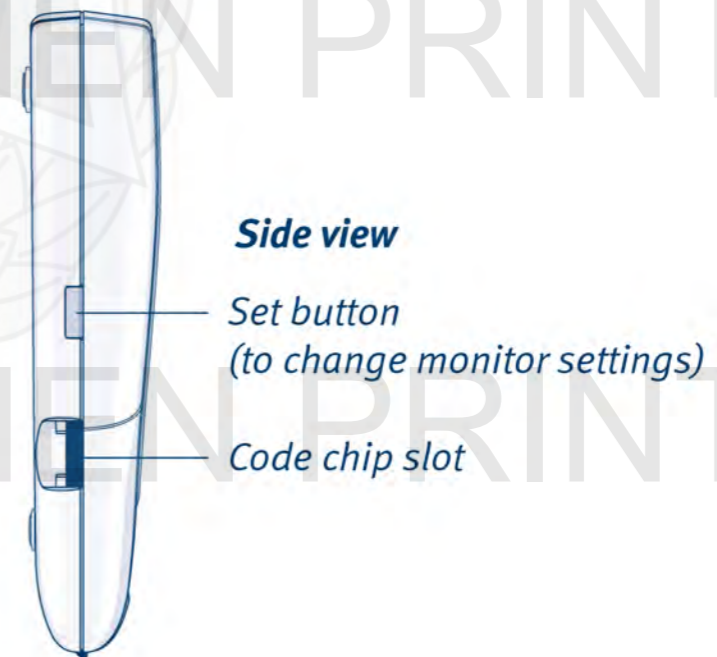
- POC INR assessment

Contraindications

- Alternate clinical priorities

Complications

- Nil in this setting

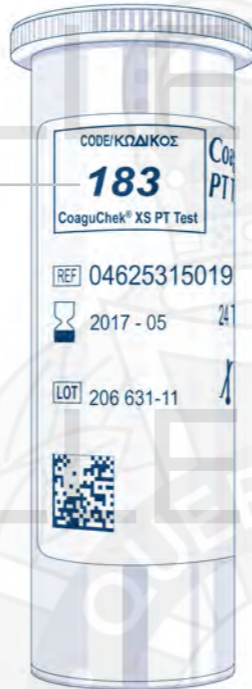


Procedure – Blood analysis – CoaguChek® XS



1. Insert the test strip until a beep sounds.

Test strip code



2. Confirm the test strip code matches the inserted code chip.

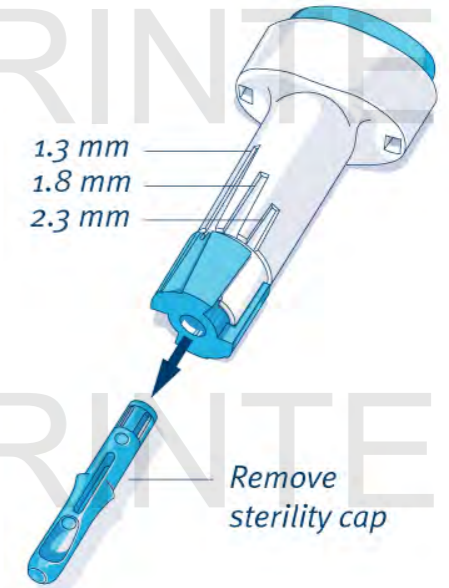
3. Press the **M** button and an hourglass will appear indicating that the test strip is being prepared.



4. When a test strip is ready (warmed) a 180 second countdown commences.



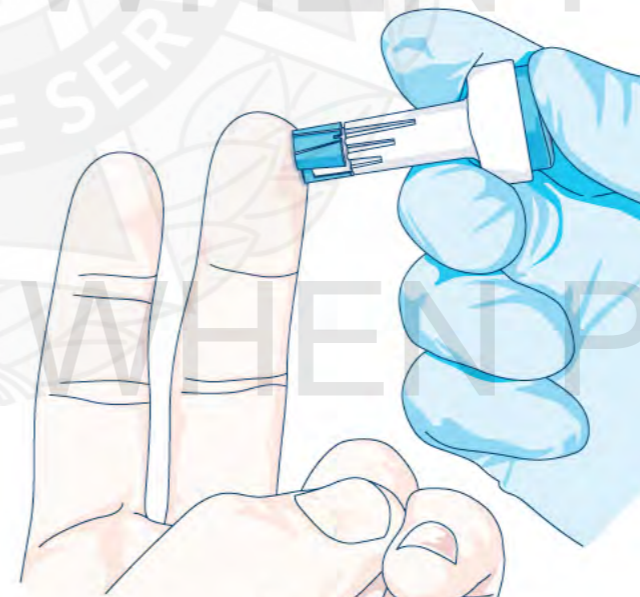
5. Remove the sterility cap from the Accu-Chek® Safe-T-Pro Plus Lancet.



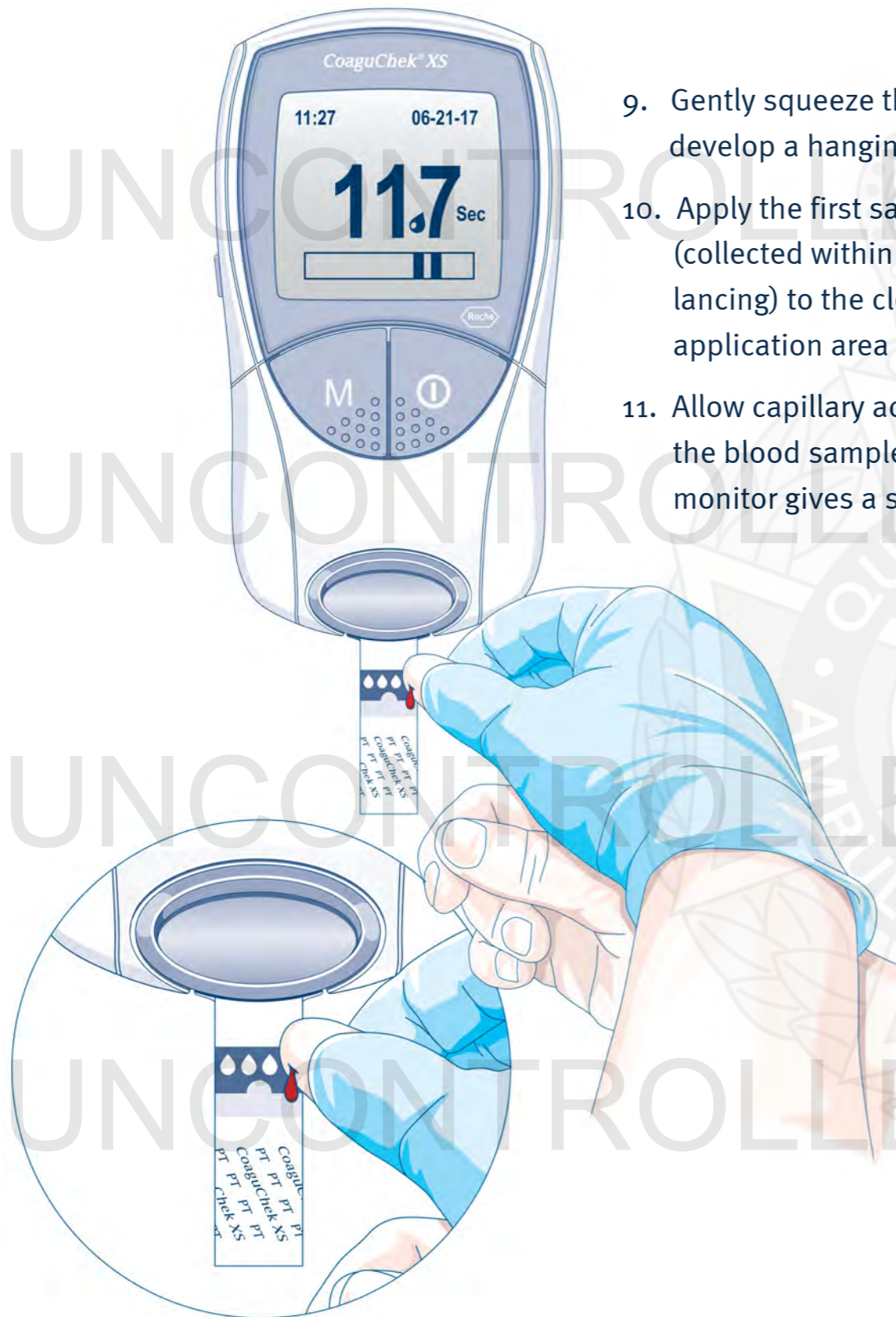
6. Set the desired penetration depth setting – *low* (1.3 mm), *medium* (1.8 mm) or *high* (2.3 mm) depending on the skin's softness.

7. Press the lancet device firmly against the desired puncture site.

8. Push the lancet release button (lancet needle will automatically retract) and immediately dispose of in a sharps container.



Procedure – Blood analysis – CoaguChek® XS



9. Gently squeeze the finger to develop a hanging drop of blood.
10. Apply the first sample of blood (collected within 15 seconds of lancing) to the clear channel application area on the test strip.
11. Allow capillary action to collect the blood sample until the monitor gives a short beep.

12. The monitor will now perform an automatic quality control (QC) check – when the QC is successful, a tick will appear and the coagulation test will begin.



13. Within 60 seconds the patient's INR result will appear and will automatically be saved to memory.

14. Remove the test strip from device and immediately dispose of in a sharps container.

Setting the date and time

Additional information

- The CoaguChek® XS settings are administered by the QAS Clinical Quality & Safety Unit.
- The device uses 4 x 1.5v AAA disposable batteries.
- When turning on the device for the first time (or following a battery change lasting > 60 seconds), you will automatically enter the Set mode requiring date (MM-DD-YY) and time (24 hr) to be entered – Use the **M** button to change selection & **SET** button to save settings.
- The CoaguChek® XS automatically stores up to 300 test results and their dates in the memory. If the memory is full when you perform a test, the oldest result is automatically deleted, with the most recent result always being saved.
- The CoaguChek® XS will automatically turn off after 3 minutes if no buttons have been pushed.
- The CoaguChek® XS may be used to test venous blood.
- The CoaguChek® XS's test performance is similar to that of a formal laboratory for values within the normal therapeutic range for warfarin therapy.

