



Clinical Practice Procedures: Trauma/Skin closure – Simple interrupted suturing

Policy code	CPP_TR_SCSI_0120
Date	January, 2020
Purpose	To ensure a consistent procedural approach to skin closure – simple interrupted suturing.
Scope	Applies to Queensland Ambulance Service (QAS) clinical staff.
Health care setting	Pre-hospital assessment and treatment.
Population	Applies to all ages unless stated otherwise.
Source of funding	Internal – 100%
Author	Clinical Quality & Patient Safety Unit, QAS
Review date	January, 2023
Information security	UNCLASSIFIED – Queensland Government Information Security Classification Framework.
URL	https://ambulance.qld.gov.au/clinical.html

While the QAS has attempted to contact all copyright owners, this has not always been possible. The QAS would welcome notification from any copyright holder who has been omitted or incorrectly acknowledged.

All feedback and suggestions are welcome. Please forward to: Clinical.Guidelines@ambulance.qld.gov.au

Disclaimer

The Digital Clinical Practice Manual is expressly intended for use by QAS paramedics when performing duties and delivering ambulance services for, and on behalf of, the QAS.

The QAS disclaims, to the maximum extent permitted by law, all responsibility and all liability (including without limitation, liability in negligence) for all expenses, losses, damages and costs incurred for any reason associated with the use of this manual, including the materials within or referred to throughout this document being in any way inaccurate, out of context, incomplete or unavailable.

© State of Queensland (Queensland Ambulance Service) 2020.



This work is licensed under the Creative Commons Attribution-NonCommercial-NoDerivatives V4.0 International License

You are free to copy and communicate the work in its current form for non-commercial purposes, as long as you attribute the State of Queensland, Queensland Ambulance Service and comply with the licence terms. If you alter the work, you may not share or distribute the modified work. To view a copy of this license, visit <http://creativecommons.org/licenses/by-nc-nd/4.0/deed.en>

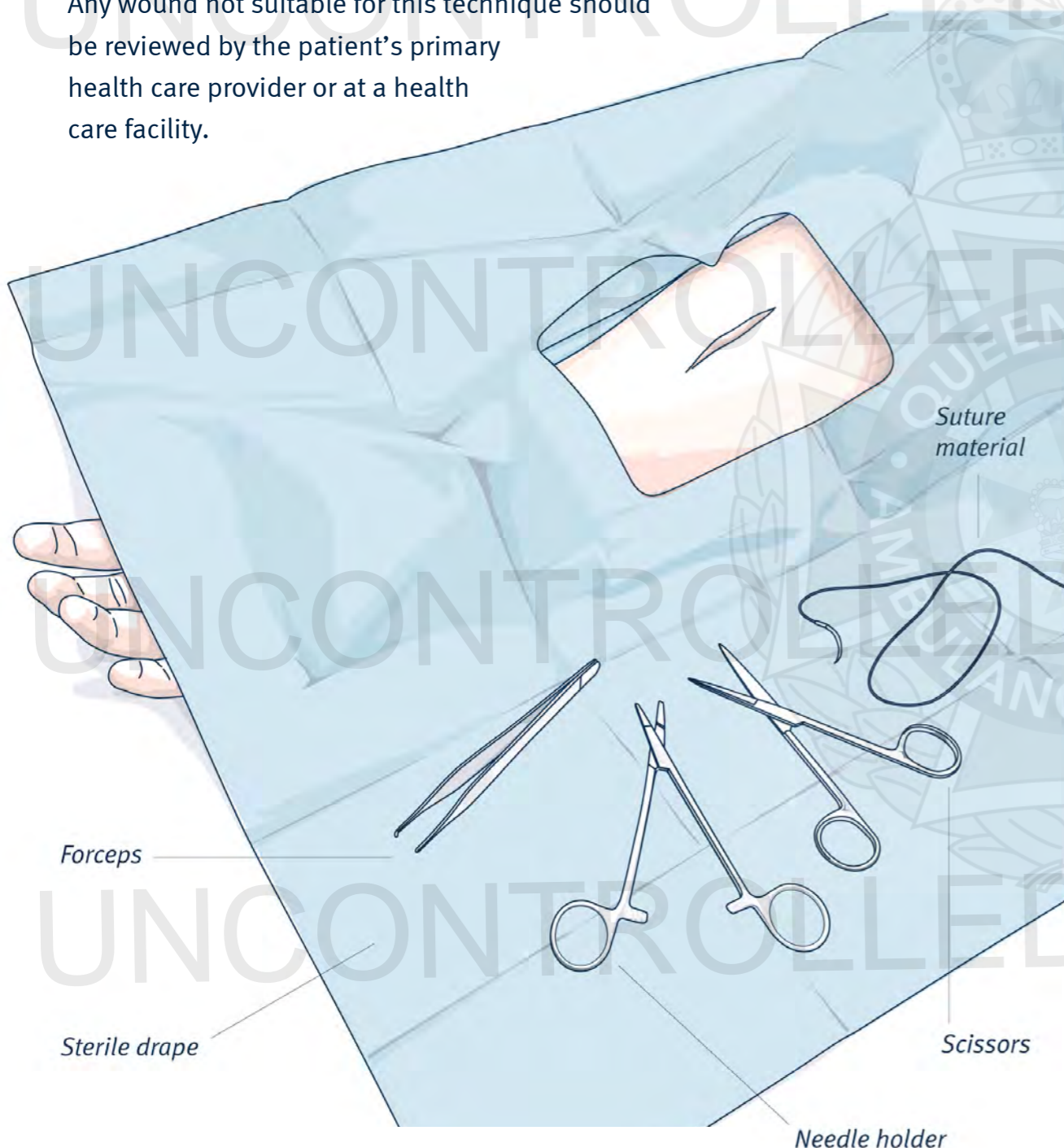
For copyright permissions beyond the scope of this license please contact: Clinical.Guidelines@ambulance.qld.gov.au

Skin closure – Simple interrupted suturing

January, 2020

Simple interrupted suturing using non-absorbable material is a common method of closing skin defects following injury. The aim of suturing is to promote rapid healing without complications.

Any wound not suitable for this technique should be reviewed by the patient's primary health care provider or at a health care facility.



Indications

- Uncontaminated simple lacerations with the following criteria:
 - Adult patient ≥ 16 ;
 - ≤ 4 hours from injury AND
 - easily apposed wound edges with non ragged edges.

Contraindications

- Wounds unable to be easily approximated
- Wounds caused by animal/human bites or marine injury (e.g. coral cuts)
- Wounds with evidence of infection
- Wounds over joints, the face (including chin), scalp, hands, ears, armpit, genitals or feet
- Obvious tissue defect or cavity (dead space) under the wound
- History of keloid scarring
- Potential damage to underlying structures (i.e. tendons or bone on view)
- Skin flaps or tear

Complications

- Wound dehiscence
- Infection
- Cosmetic (e.g scarring)

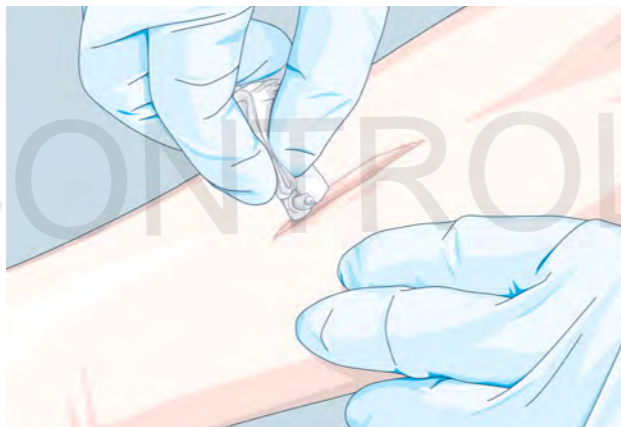
Procedure – Skin closure – Simple interrupted suturing

1. Apply required infection control measures (refer to *QAS Infection Control Framework*).
2. Inspect the wound and confirm suitability for simple interrupted suturing.

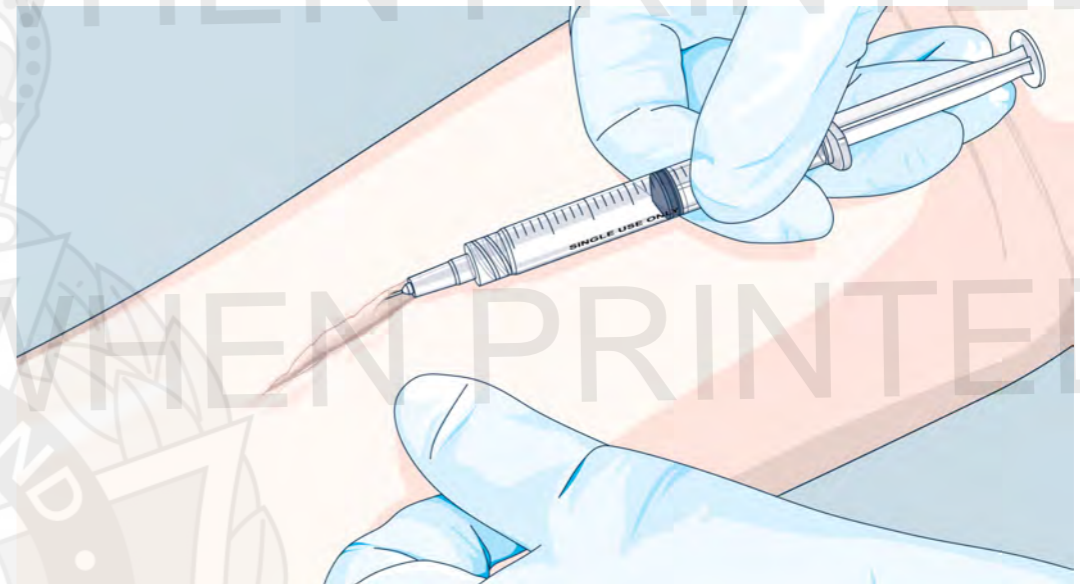


- If no complications exist, obtain informed consent and send a photograph of the wound (with the case number annotated in the subject line) via email to QASLARU.Review@ambulance.qld.gov.au.
- Contact the *QAS Clinical Consultation and Advice Line* and request that the wound photograph be reviewed to confirm the suitability of simple interrupted suturing.

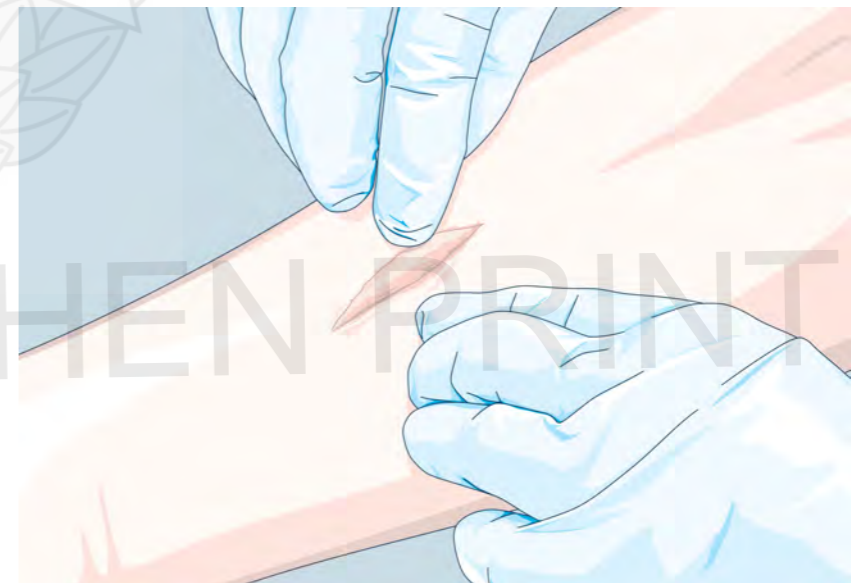
3. Thoroughly clean the wound using sodium chloride 0.9%.



4. Prepare a suitable volume of lidocaine 1% (lignocaine 1%) – refer to *DTP: Lidocaine 1% (lignocaine 1%)*.
5. Infiltrate the skin surrounding the wound – refer to *CPP: Drug & fluid administration / Direct infiltration of local anaesthetic*.



6. Explore the wound to ensure that the bottom can be clearly visualised and no underlying structures are potentially damaged.

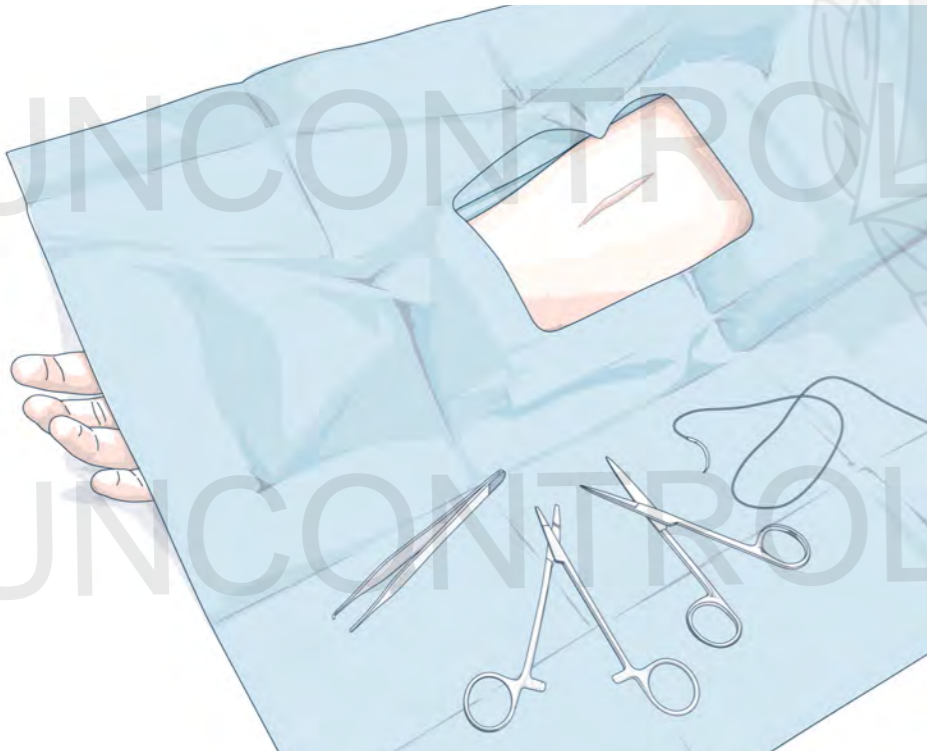


Procedure – Skin closure – Simple interrupted suturing

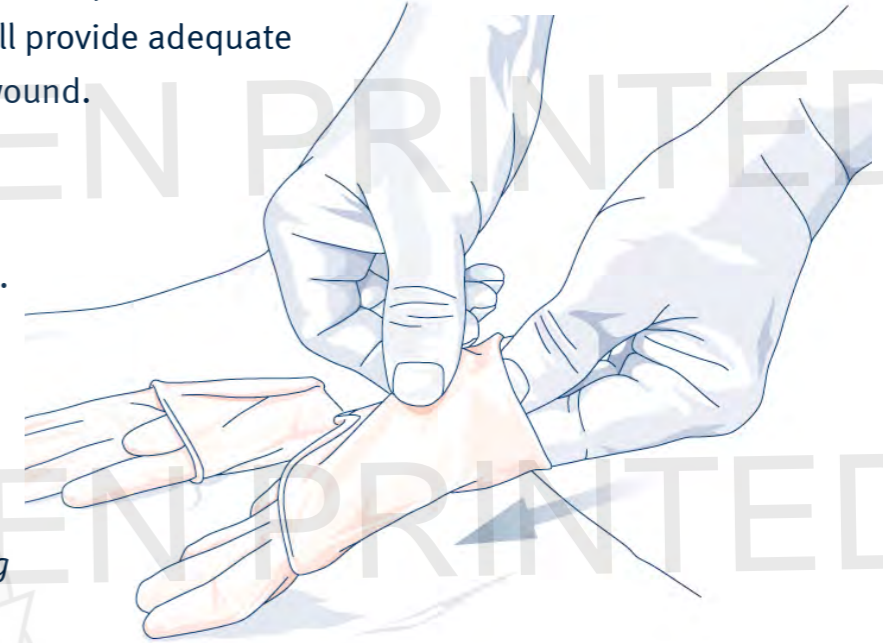
7. Thoroughly re-clean the wound using sodium chloride 0.9%.
8. Remove excess moisture with a sterile gauze / combine.



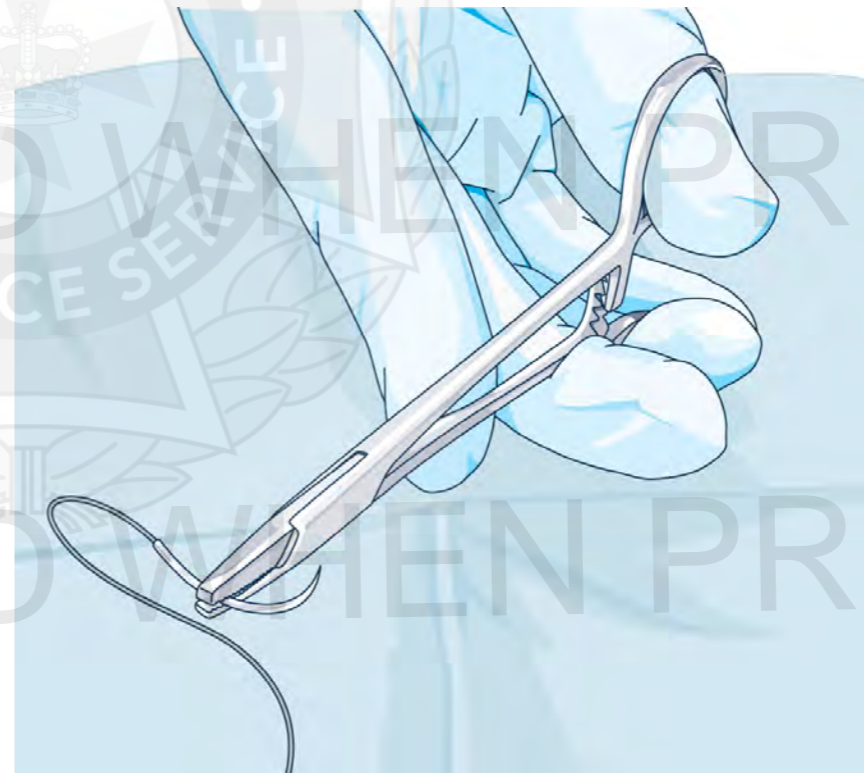
9. Prepare a sterile field by draping the wound with a sterile fenestrated drape.



10. Select an appropriate suture diameter for the location and type of wound – use the thinnest possible suture material that will provide adequate strength to close the wound.
11. Open the suture pack and place contents on a prepared sterile field.
12. Perform appropriate hand hygiene and don sterile gloves – refer to *CPP: Other / Donning and doffing of medical gloves*.

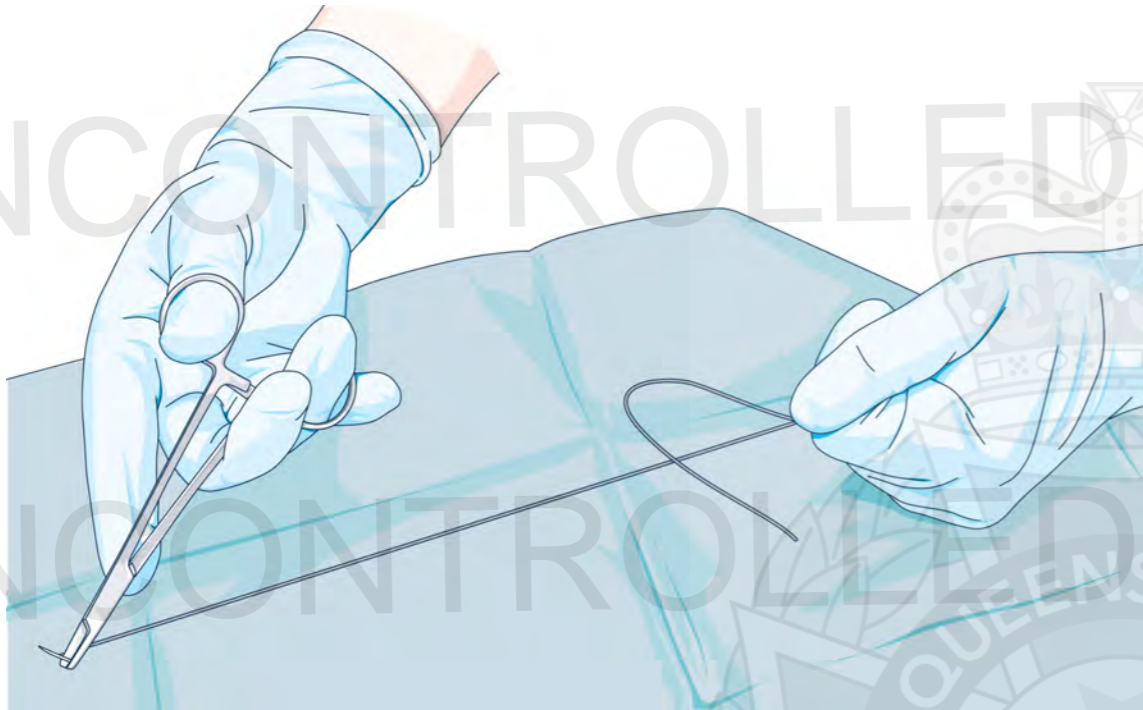


13. Grip the needle with the needle holder ready for suturing.

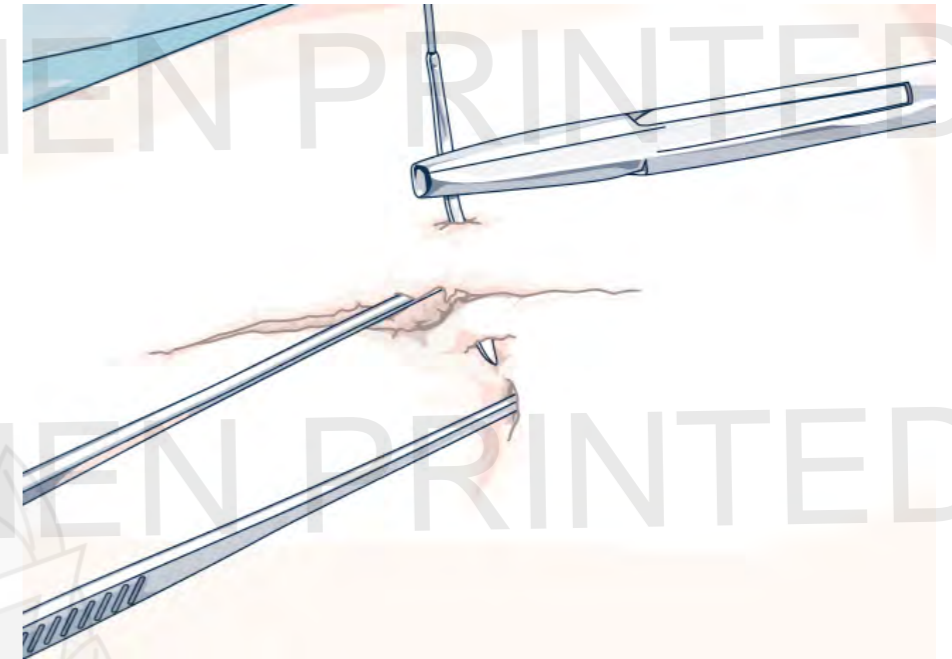


Procedure – Skin closure – Simple interrupted suturing

14. Consider gently stretching the suture material to remove its 'memory'.

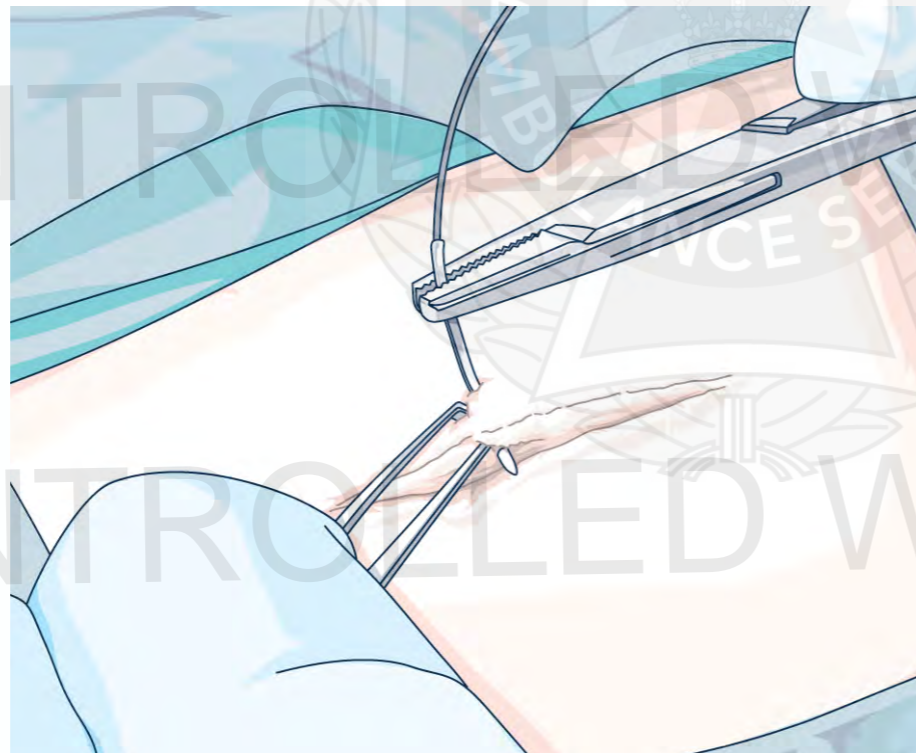


b) Penetrate the subcutaneous tissue on the wound's other side and exit via the epidermis above.

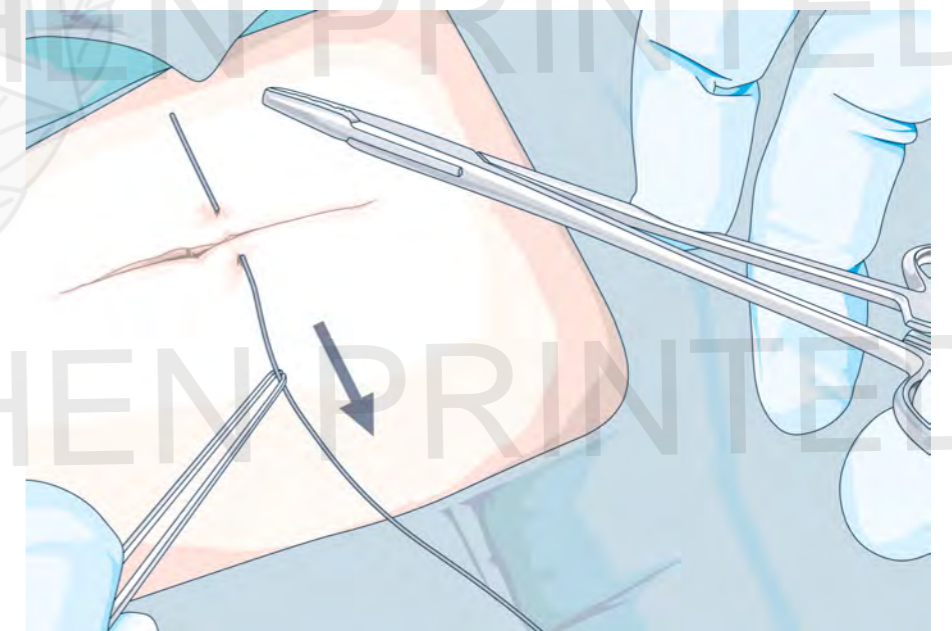


15. Lift the tissue edge and insert the first suture in the middle of the wound – ensure the wound edges are slightly everted.

a) With the needle tip perpendicular to the skin penetrate the epidermis on one side and gently rotate the wrist to advance the needle through the subcutaneous tissue.

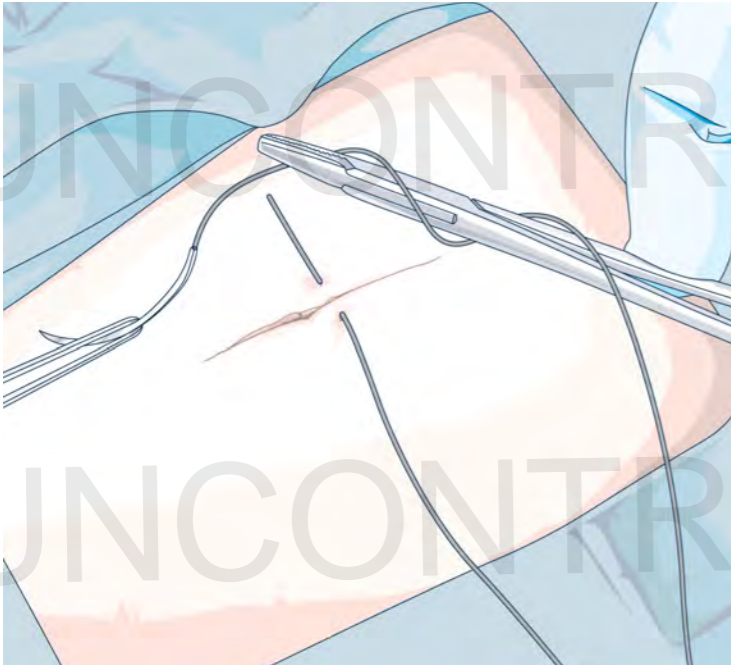


c) Gently pull the suture material through the skin leaving approximately 10–20 mm exposed from the entry site.

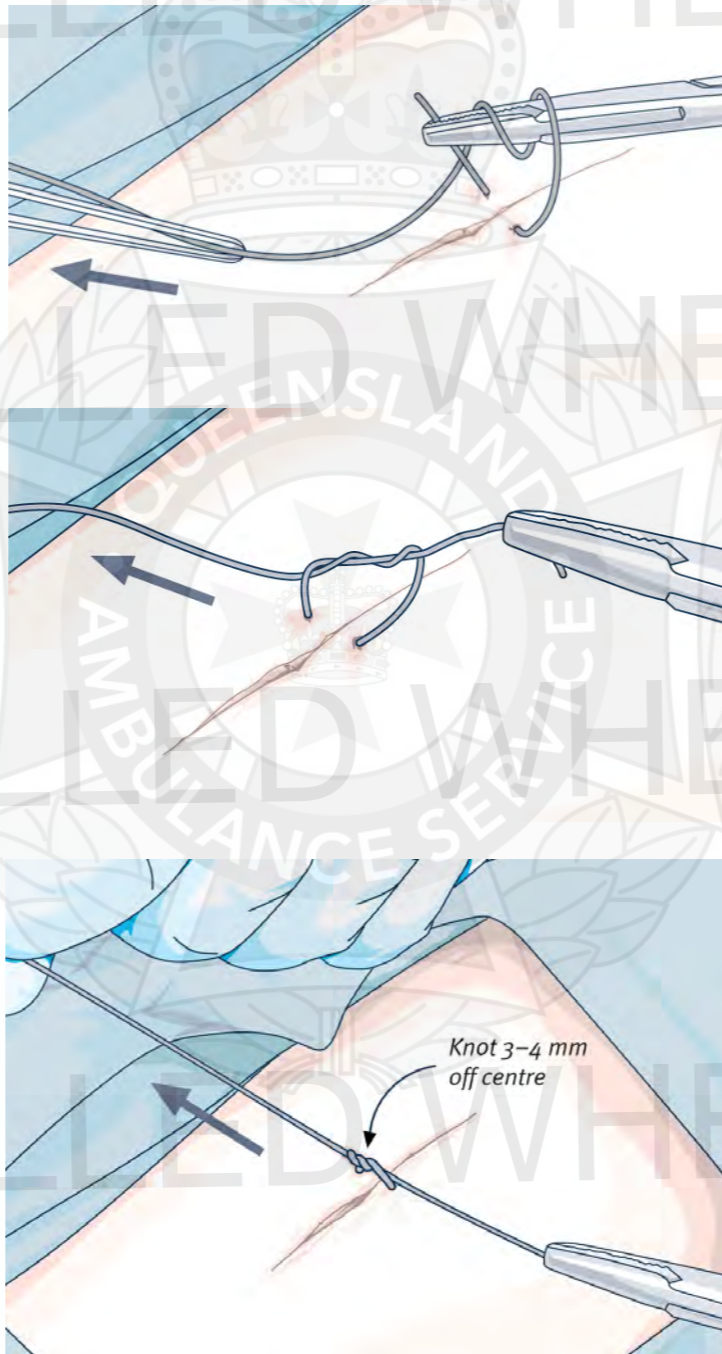


Procedure – Skin closure – Simple interrupted suturing

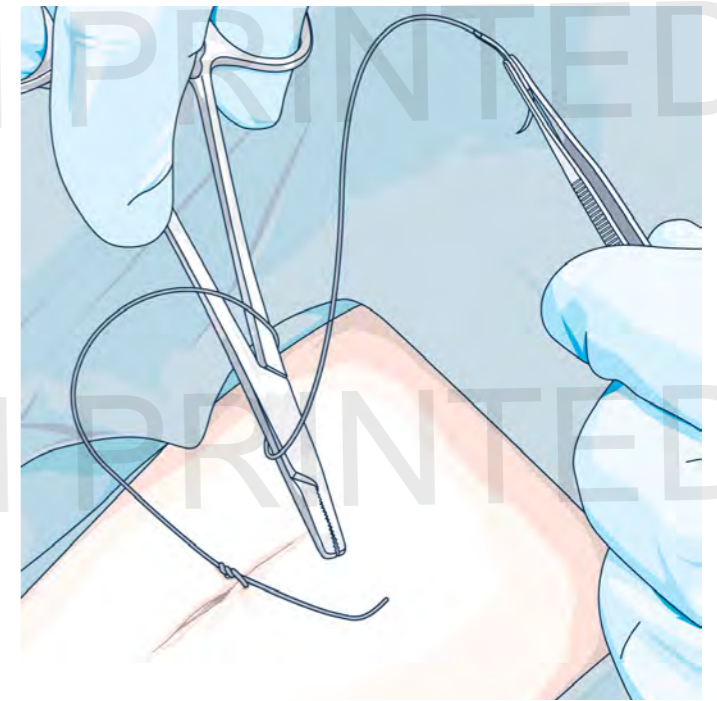
- d) Wrap the suture material twice around the needle holder in a clockwise direction.



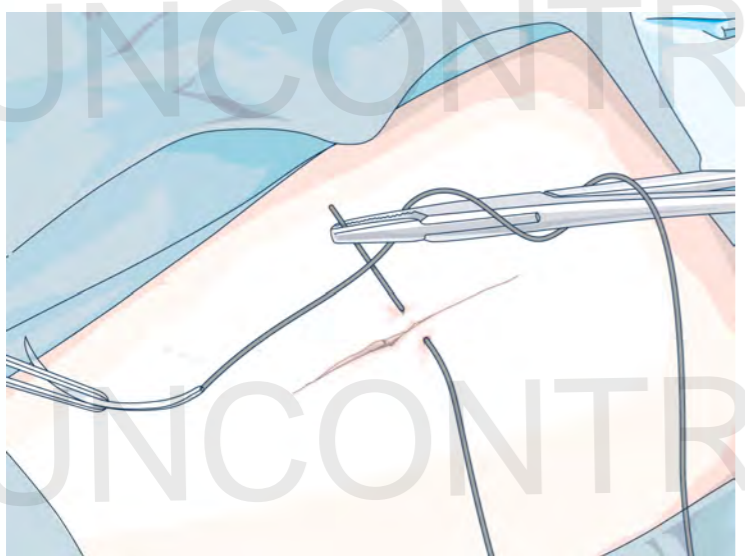
- f) Gently pull through the suture material loops ensuring the knot lies flat and slightly off centre (3–4 mm from the wound edge). The short end of the suture material should now be on the opposite side



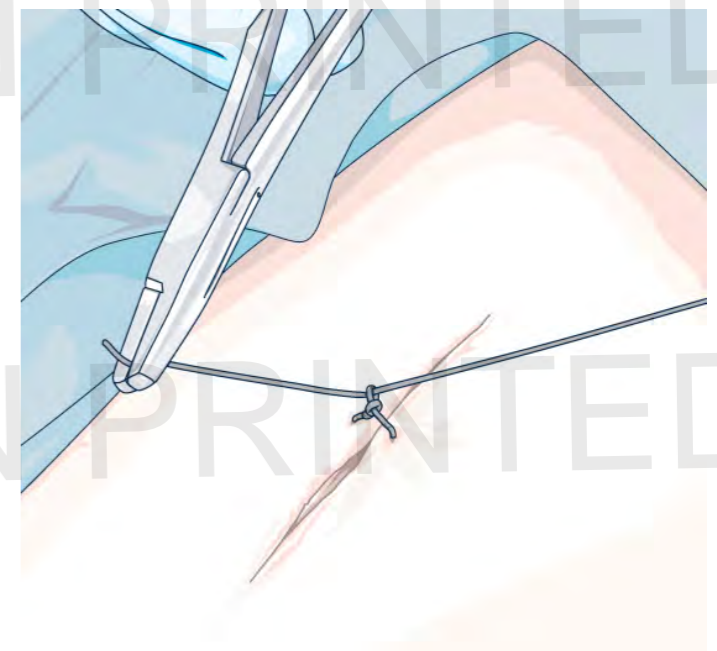
- g) Finalise the securing suture by repeating the preceding steps (d–f) twice with a single throw for each knot to end with (h).



- e) Grab the short end of the suture material with the needle holder.

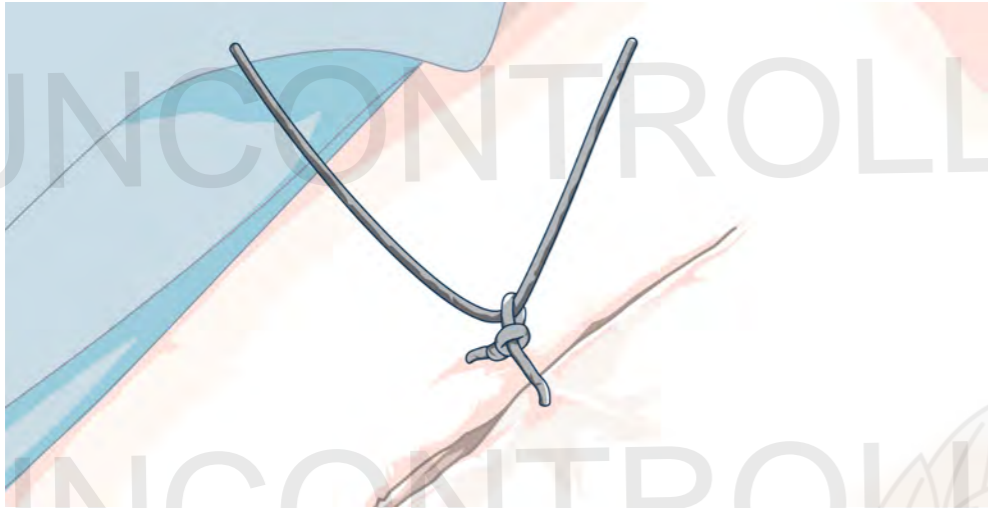


- h) Finalised knot.



Procedure – Skin closure – Simple interrupted suturing

- i) Cut the tail ends of the suture material to leave 1–2 cm of suture material.



16. Commencing at the wound edge furthest from the paramedic, repeat steps 14 (a–i) until the wound is fully apposed.



17. Ensure the skin between sutures is not puckered or pulled too tight as this may cause tissue ischaemia and/or a poor cosmetic result.

18. Re-clean the closed wound with sodium chloride 0.9%.
19. Remove excess moisture with a sterile gauze/combine.
20. Once dry, apply an appropriate non-adherent dressing to the wound.
21. Provide the patient with a copy of the [QAS Wound Care Information](#) sheet. Explain all information and answer any questions asked by the patient.

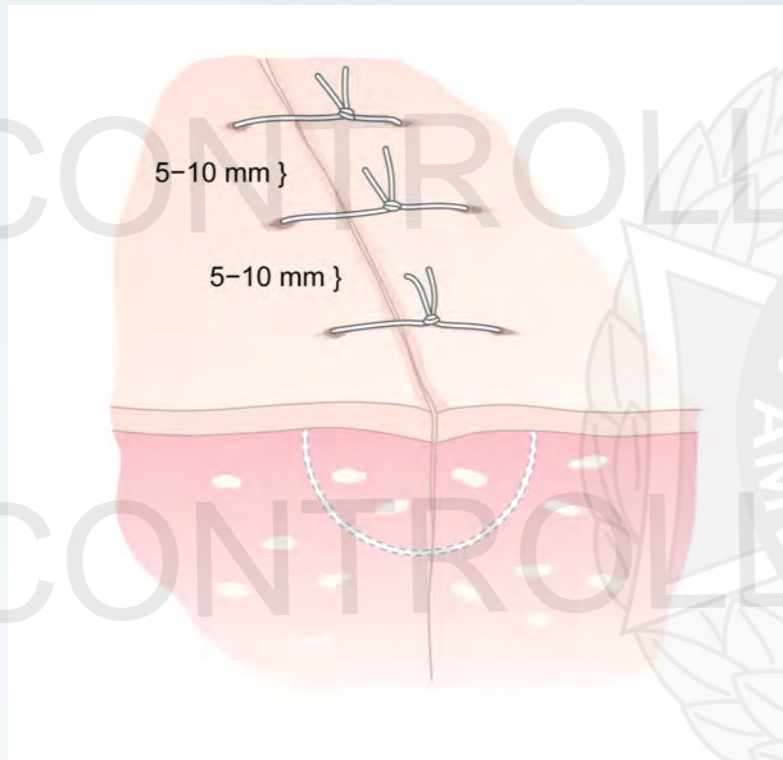
Additional information

- The use of medical gloves is not a substitute for hand hygiene. Hand hygiene should be performed before donning and doffing medical gloves and immediately before and after any procedure.
- Eye protection must be worn by all clinicians. The potential of blood and body fluids exposure (especially in the face and eyes) during this procedure is **HIGH**.
- All patients with unknown Tetanus immunisation status OR ≥ 5 years since their last Tetanus immunisation must be reviewed within 24 hours by a doctor.
- Guide for appropriate suture diameter and suggested time to removal of sutures.

Site	Suture Diameter	Days to Suture Removal
Chest/Abdomen	3/0 – 4/0	7 days
Back	3/0 – 4/0	7 – 10 days
Arm	3/0 – 4/0	7 days
Leg	3/0 – 4/0	7 days

+ Additional information *(cont.)*

- Antibiotics are not routinely indicated for simple lacerations.
- Wounds have only 7% of their final strength on day five.^[3]
- Sutures (non-facial) knots should be positioned approximately 3–4 mm from the skin edges and 5–10 mm apart.



- The collection of clinical image for the purpose of clinical consultation AND/OR quality assurance forms part of the patient's health care record and their existence must be documented on the patient's eARF. This can be done by selecting the image tick box in the eARF app at the following location: Care / Procedure / Consult / Clinical Consultation and Advice Line.

Audit

- All wounds involving paramedic initiated suturing and Histoacryl® skin adhesive application are subject to clinical audit and review. Officers are required to obtain informed consent from the patient and send the following information to QASLARU.Review@ambulance.qld.gov.au:
 - Case Number
 - Paramedic name and medal number; AND
 - Photographs (before and after closure).